



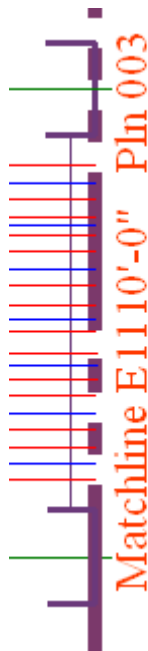
3. Add the text shown to the *Vessel* file in the C:\Steps\Lesson15 folder.

**NOTES:**

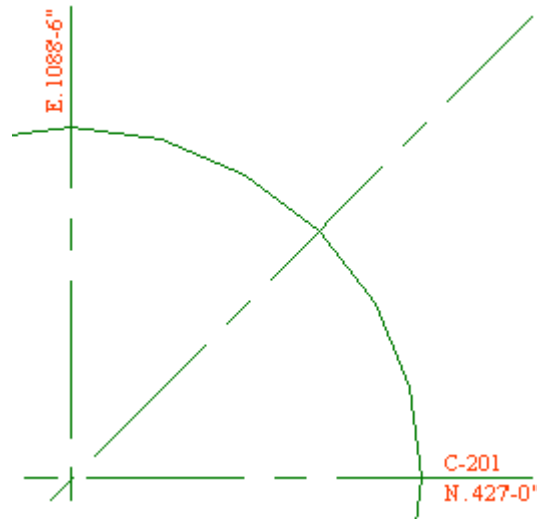
1. Design Temp: 550°
2. Design Pressure: 200PSIG
3. 1/8" Corrosion Allowance for shell and heads
4. Fireproofing by client.
5. Bolt holes to straddle N/S centerline.
6. All nozzles are 300# except where noted.
7. Paint per client spec. 1003254789SPN

Vessel Notes

4. Add the text and notes to the piping plan on which we've been working. See the completed drawing following the details. The file is *My Piping Plan 15* in the C:\Steps\Lesson15 folder. If that file isn't available, use the *Piping plan 15* file located in the same folder.
  - 4.1. When plotted, the text heights should be 1/4", 3/16", and 1/8". The drawing will plot on a 3/8"=1'-0" scale. All text uses the *Times* style.
  - 4.2. The following details will help you see the text better.



Matchline Callout



Vessel Coordinates

**NOTES:**

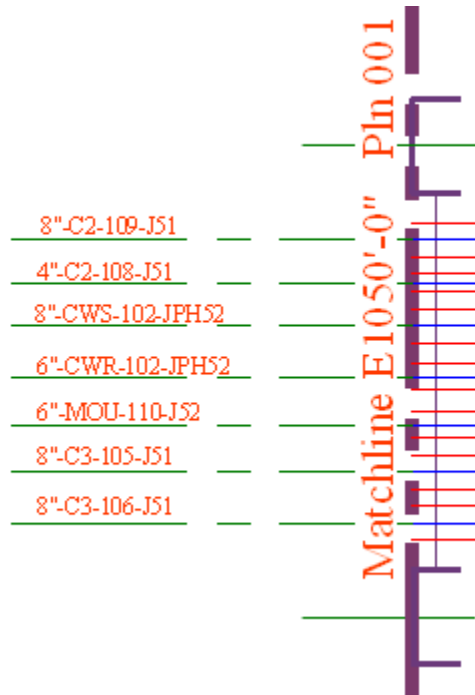
1. High and low point vents and drains required on all pipe.
2. See drawings *SPC4001* through *SPC 4009* for Piping Support Standards.
3. See drawings *INS2022* through *INS2025* for Instrumentation Installation Details.
4. **Hold drawing for Stress Analysis.**
5. See customer spec *TXCO502331-103a/b* for construction specifications.
6. HPFS is 101'-0"

Insert the file *Piping Notes.txt* found in the C:\Steps\Lesson 15 folder. Then modify it to look like this.



## Drawing Limits N. 395'-0"

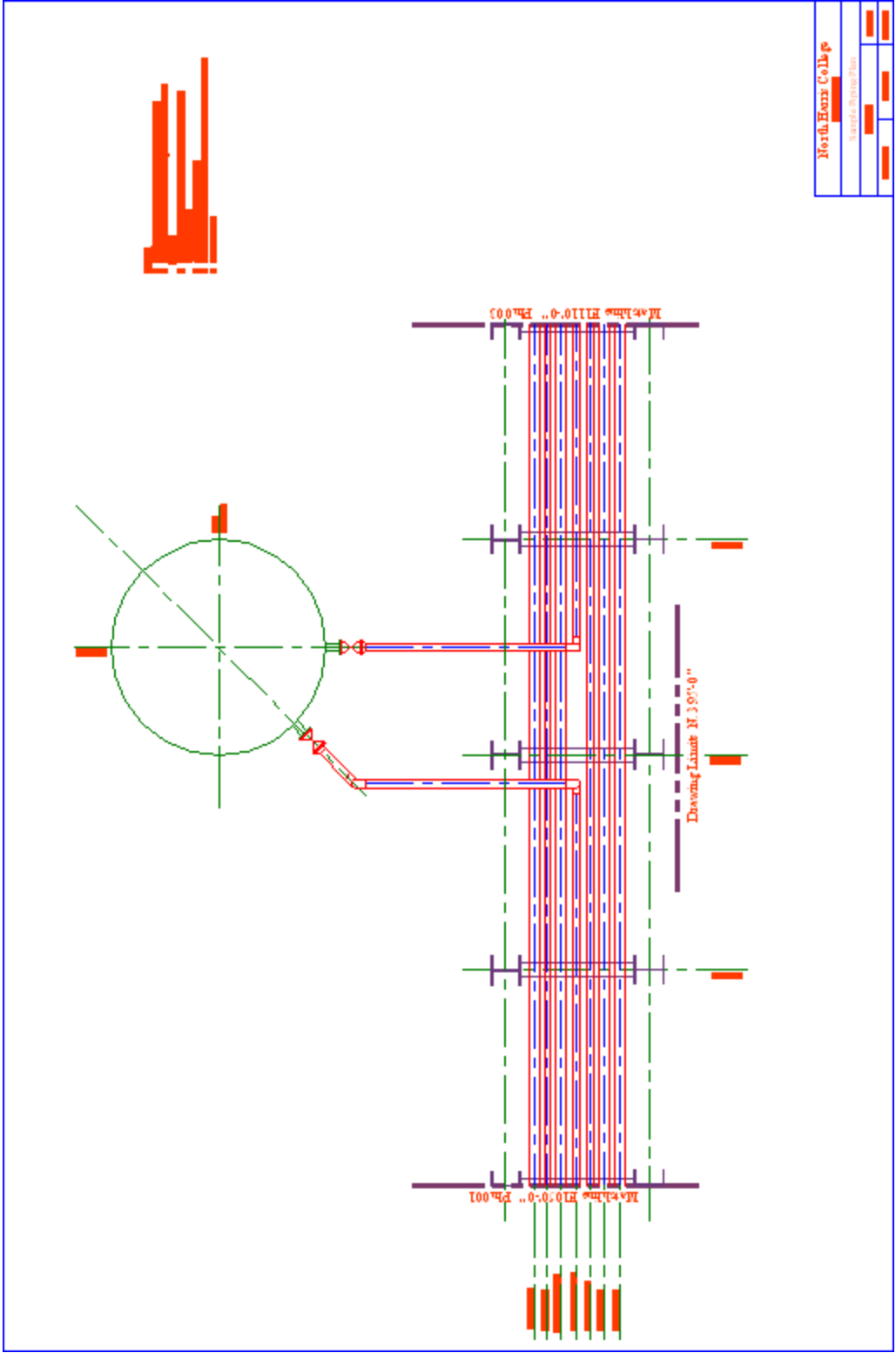
Drawing Limits Callout



Line Number Callouts

<h3 style="color: red;">North Harris College</h3> <p style="color: red;">Houston, Texas</p>		
<h3 style="color: red;">Sample Piping Plan</h3>		
<p style="color: red;">Tim Sykes</p>		<p style="color: red;">PLN-002</p>
<p style="color: red;">July 4, 1776</p>	<p style="color: red;">3/8"=1'-0"</p>	<p style="color: red;">Sht. 1 of 1</p>

Title Block



Piping Plan

Please write your answers on a separate sheet of paper.

1. To access AutoCAD's Multiline Text ribbon, enter the \_\_\_\_\_ command.

To anchor text at the bottom center of the multiline text border, I would first select the (2) option in the MText command, and then use the (3) option.

4. If the text entered is too large for the default border, AutoCAD will automatically expand the border (in what direction?) \_\_\_\_\_.

5. When using a 90°-text rotation, the multiline text border will expand in which direction?

6. (T or F) The user can reset each of the MText options from within the Multiline Text ribbon.

Name two types of files – listed by file extension – which can be imported into AutoCAD's Multiline Text Editor?

7.

8.

List the four ways the user can emphasize Multiline Text.

9. \_\_\_\_\_ 11. \_\_\_\_\_

10. \_\_\_\_\_ 12. \_\_\_\_\_

13. Use the \_\_\_\_\_ Multiline Text option on the cursor menu to insert special characters.

14. Pick the \_\_\_\_\_ Multiline Text option on the cursor menu to change the justification of the text.

15. Pick the \_\_\_\_\_ Multiline Text option on the cursor menu to replace one word with another.

16. When selecting objects for AutoCAD's Spell Checker, type \_\_\_\_\_ to tell AutoCAD to spell check the entire drawing.

17. To share the project dictionary, it should be given a \_\_\_\_\_ extension.

18. (T or F) Type MText, T, or MT to call the Multiline Text ribbon.

19. (T or F) The MText Editor will not permit setup changes from inside the editor.

20. (T or F) RTF or Rich Text Format saves the basic formatting of the original text when it is imported into another document.

21. (T or F) Use the DDEdit command to edit both Dynamic Text (DText) and Multiline Text (MText).

22. (T or F) Hit the Enter key to select a whole line of text.

23. (T or F) Pick the Undo button to make highlighted text bold.

24. (T or F) To complete editing of multiline text, hit the Enter key.
25. (T or F) Placing the cursor on one end of the text, depressing the left mouse button, and dragging to the other end of the desired selection will select large sections of text.
26. (T or F) In the Multiline Text Editor, you can place all occurrences of a word or phrase with another word or phrase.
27. (T or F) The Happy Face (☺) may be inserted as a special character in your text using the proper font and key.
28. (T or F) Symbols for degree, plus/minus, or diameter are not included in the symbol library.
29. (T or F) AutoCAD has no easily inserted Ohm symbol.
30. (T or F) You can use Fields as part of multiline text.
31. (T or F) The Multiline Text Editor will not automatically number your lists.
32. (T or F) You cannot use bullets in Multiline Text.
33. (T or F) You cannot stack fractions in Multiline Text.
34. (T or F) You cannot use foreign lettering (Hebrew/Japanese/etc) in AutoCAD's multiline text editor.
35. (T or F) You can use tabs and paragraph indentions in AutoCAD's multiline text editor.
36. (T or F) When you check spelling in AutoCAD, you can use your own dictionary.
37. (T or F) Use the Columns command to create multiline text columns.
38. When creating columns, use the (Dynamic, Static) option to be able to manually adjust the column height.
39. In the Column Settings dialog box, which two options must you fill out for AutoCAD to automatically fill out the third?
  - a. Column
  - b. Gutter
  - c. Total
  - d. Any two

## Answers

- |                         |             |
|-------------------------|-------------|
| 1. MText                | 21. T       |
| 2. Justify              | 22. F       |
| 3. BC                   | 23. F       |
| 4. Downward             | 24. F       |
| 5. Right                | 25. T       |
| 6. T                    | 26. T       |
| 7. TXT, RTF, DOC        | 27. T       |
| 8. TXT, RTF, DOC        | 28. F       |
| 9. Bold                 | 29. F       |
| 10. Italicize           | 30. T       |
| 11. Underline           | 31. F       |
| 12. Color               | 32. F       |
| 13. Symbol              | 33. F       |
| 14. Paragraph Alignment | 34. F       |
| 15. Find and Replace    | 35. T       |
| 16. All                 | 36. T       |
| 17. CUS                 | 37. F       |
| 18. T                   | 38. Dynamic |
| 19. F                   | 39. d       |
| 20. T                   |             |