

# AutoCAD 2006: One Step at a Time

## Plotter Setup Supplement\*

S1

### First Things First – Setting Up Your Printer (or Plotter)

Before actually printing a document in any application, you must first tell the application which printing device you'll use. The reasons are technical and involve those driver gizmos about which you've probably read. All printers ship with their own *drivers*. You must help the application – in this case, AutoCAD – to figure out which one to use.

A *driver* is actually a file on your computer's hard drive. It contains code – programming language – that helps your computer communicate with your printer. Or more simply, consider the driver as a tiny man living inside your computer. His job is to translate the language your computer speaks into the language your printer speaks (and vice versa). Since each printer speaks its own language, you must help your application decide which little man (translator) you need to do that translating.

Fortunately, that isn't as complicated as it might seem, and it only needs to be done once for each printing/plotting device (as the insert indicates, you don't have to do it at all for printers).

AutoCAD provides wizards to help. (We'll use a printing device, although adding a plotter will use the same procedure.)

Find the shortcut used to access the **Add-a-Plotter Wizard** by typing **Plottermanager** at the command prompt or selecting **Plotter Manager...** from the File pull-down menu.

AutoCAD opens a new window (Figure S1.001) showing the Add-a-Plotter Wizard shortcut and the setups that ship with AutoCAD (these are used for creating web pages and don't actually need a printer).

Double-click on the **Add-a-Plotter Wizard** shortcut to begin the wizard.

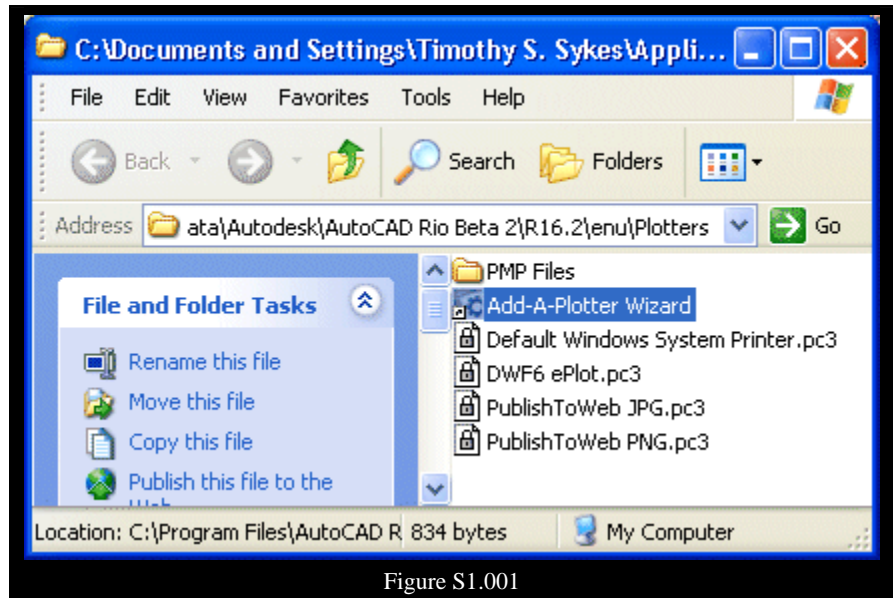


Figure S1.001

Let's set up a printer together. (I'll be using a Minolta QMS Magicolor 2300DL printer – your screens may vary a bit depending upon your printer.)

**Do This:**  
S1.1


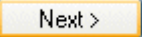
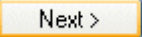
### Set Up a Printer

- I. Open the *pid-21.dwg* file in the C:\Steps\Lesson21 folder.

\* From *AutoCAD 2004: One Step at a Time*

II. Zoom extents.

III. Follow these steps.

TOOLS	COMMAND SEQUENCE	STEPS
	<b>Command:</b> <i>plottermanager</i>	1. Open the Plotters window by typing <b>Plottermanager</b> at the command prompt or selecting <b>Plotter Manager</b> from the File pull-down menu.
		2. Double-click on the <b>Add-a-Plotter Wizard</b> shortcut.
		3. AutoCAD presents the Add Plotter – Introduction Page. Read through this and then pick the <b>Next &gt;</b> button.
		4. AutoCAD presents the first dialog box (Figure S1.002) with the options for selecting the type of printer/plotter you wish to add. <ul style="list-style-type: none"> <li>○ The <b>My Computer</b> option will add a plotter.</li> <li>○ The <b>Network Plotter Server</b> option will add a network plotter.</li> <li>○ The <b>System Printer</b> will add a local printer (or the printer your computer is already using).</li> </ul> <p>We'll add a system printer. Put a bullet in that option, and then pick the <b>Next &gt;</b> button.</p>

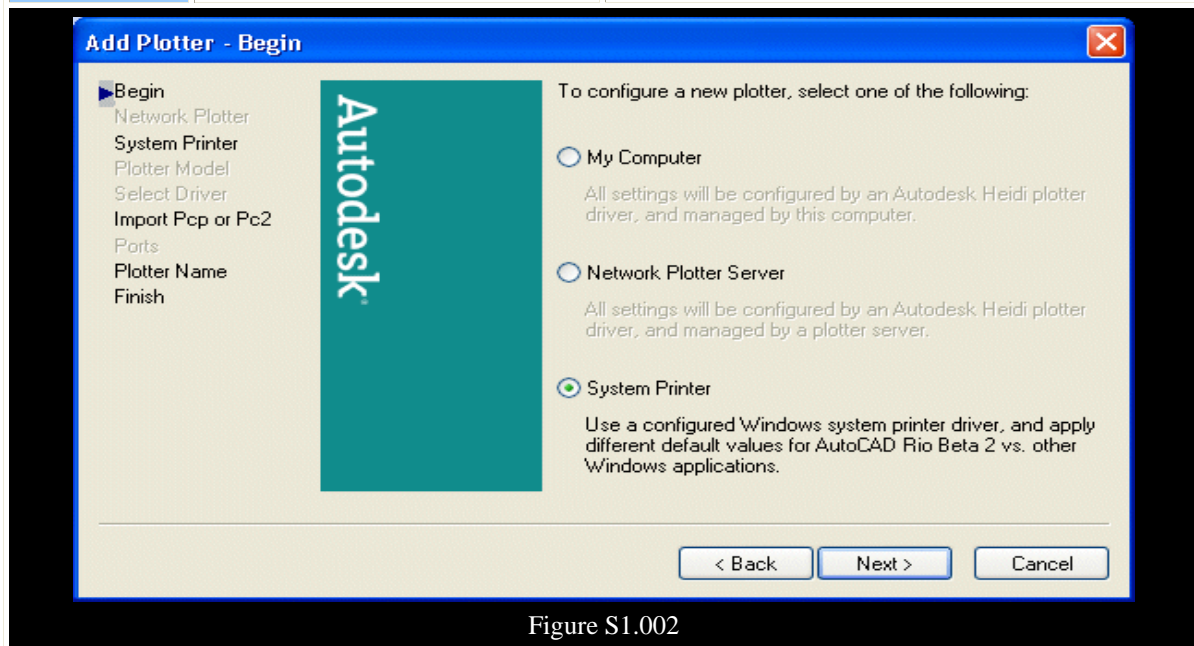


Figure S1.002

TOOLS	COMMAND SEQUENCE	STEPS
<p style="text-align: center;">Next &gt;</p>		<p>5. Now we'll select which printer we wish to use from the list box AutoCAD presents in the Add Plotter – System Printer dialog box (Figure S1.003). (The list comes from the printers your Windows system has already been configured to use.)</p> <p>I'll select the Magicolor 2300; but you should select the printer your system uses.</p> <p>Pick the <b>Next &gt;</b> button to proceed.</p>

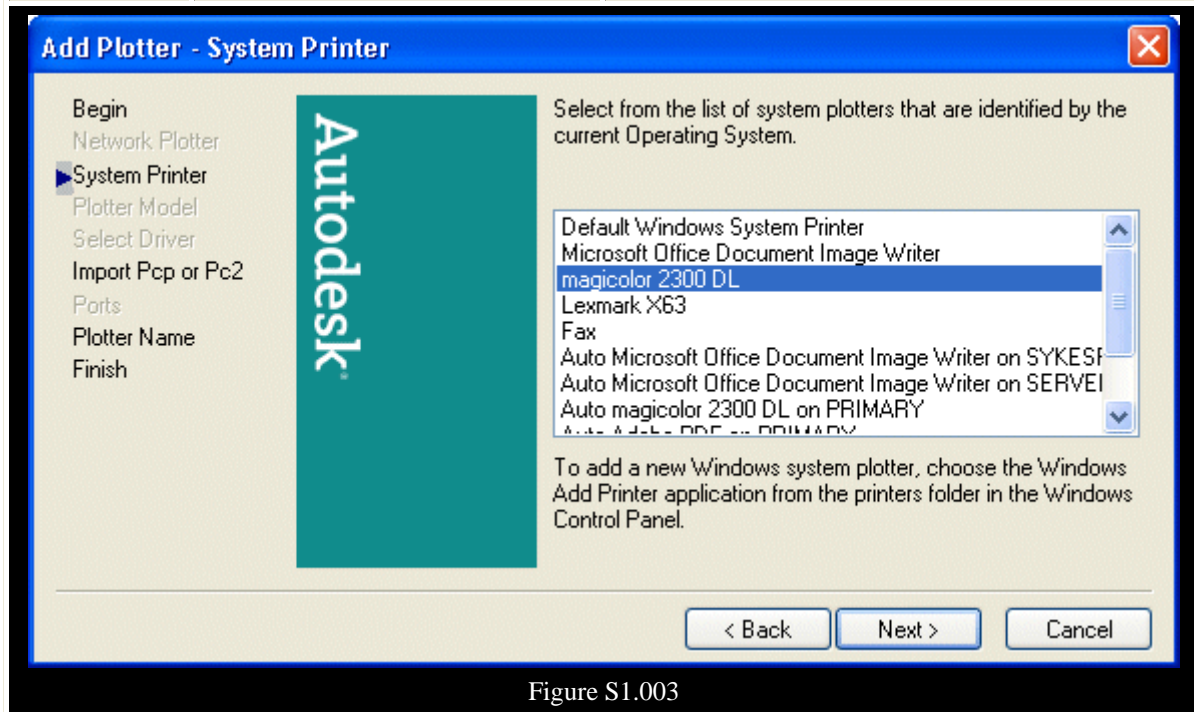


Figure S1.003

<p style="text-align: center;">Next &gt;</p>		<p>6. Had we saved plotter information from an earlier release of AutoCAD (Figure S1.004), we could import that information into AutoCAD. We've no files to import, so simply pick the <b>Next &gt;</b> button.</p>
--	--	---

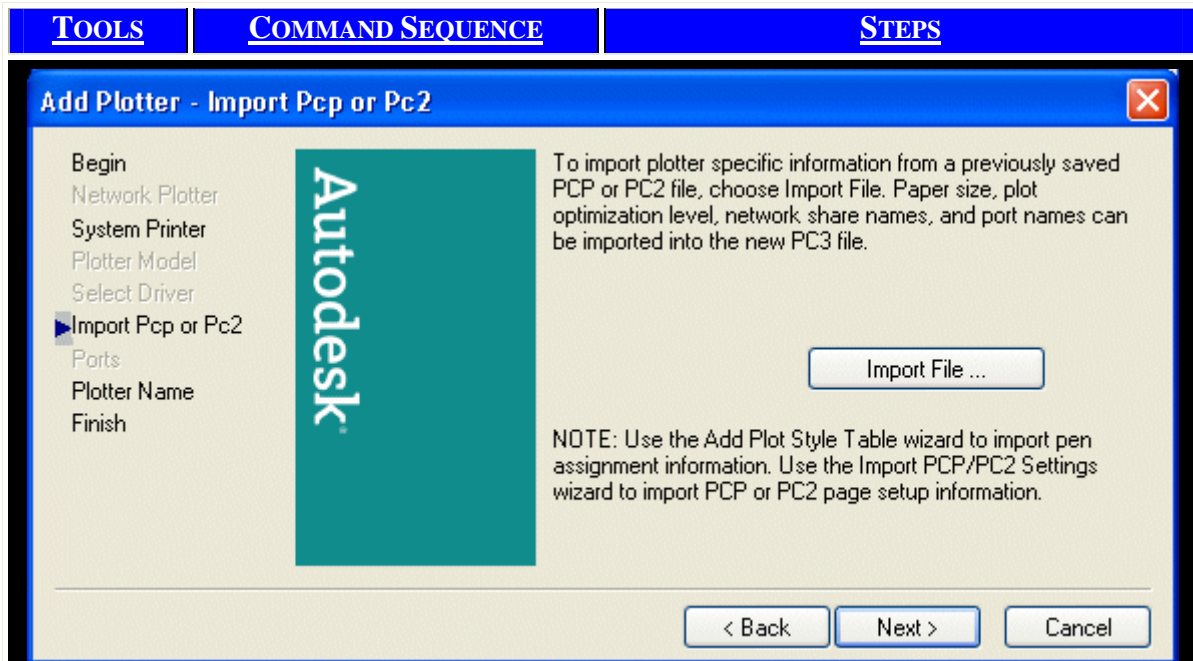


Figure S1.004

<input type="button" value="Next &gt;"/>	<p>7. Give the printer/plotter a name that you can easily recognize. I'll call mine <b>Magicolor BW</b> (Figure S1.005) to indicate that I'll set up this printer for black-and-white plots (that part of the setup is still to come).</p> <p>Pick <b>Next &gt;</b> to continue.</p>
--	--

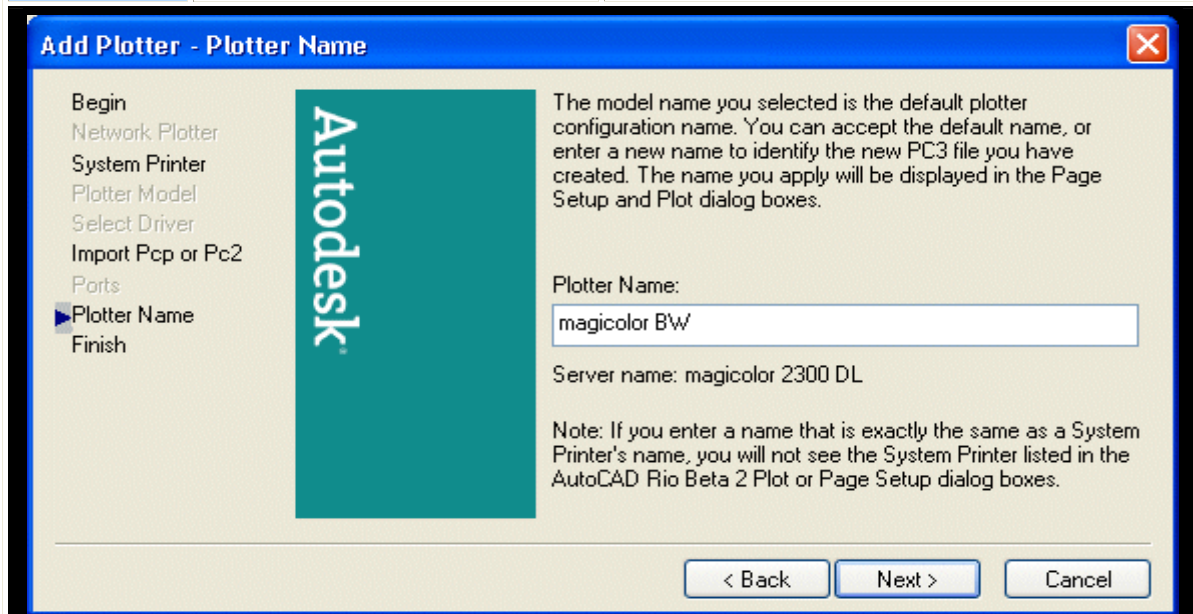


Figure S1.005

TOOLS	COMMAND SEQUENCE	STEPS
		<p>8. The next dialog box (S1.006) is a bit deceptive. We're not quite finished until we calibrate our plotter to be sure our "tiny man" is communicating properly. We may also make any changes to our printer/plotter's configuration at this time.</p> <p>Let's begin by editing the configuration. Pick the <b>Edit Plotter Configuration ...</b> button.</p>

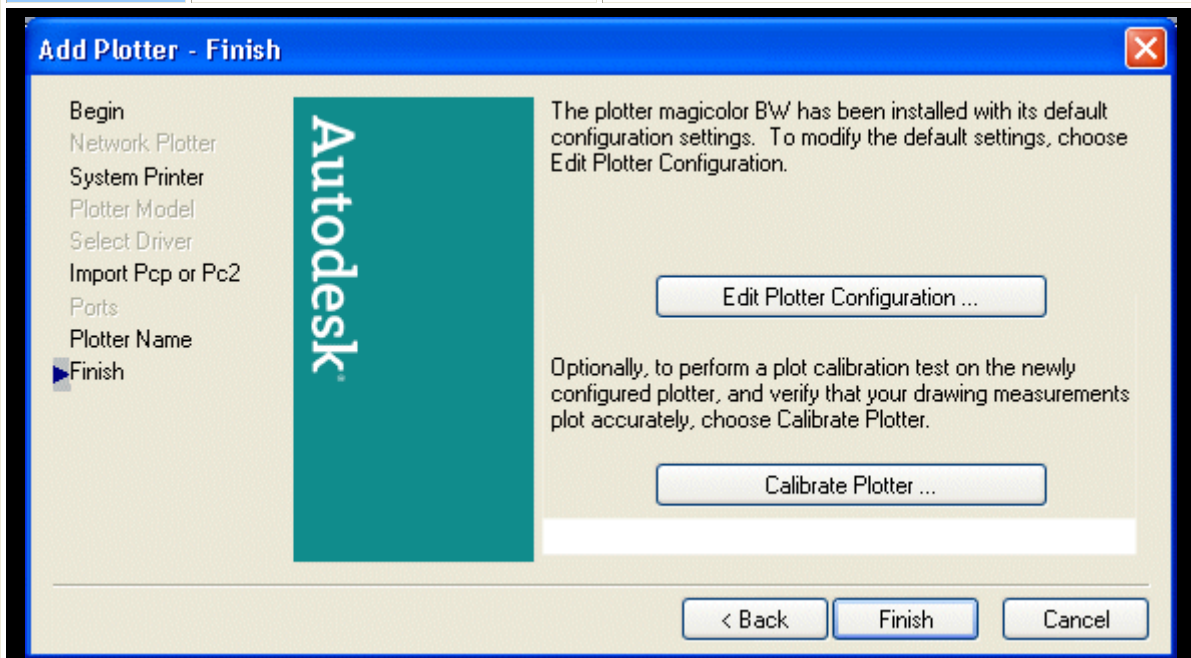


Figure S1.006

		<p>9. AutoCAD presents the Plotter Configuration Editor (Figure S1.007) atop the wizard.</p> <ul style="list-style-type: none"> <li>○ We can select different drivers (<i>not</i> recommended) using the <b>General</b> tab (not shown).</li> <li>○ We can configure a port (best left to the project guru) or tell AutoCAD to plot to a file by default on the <b>Ports</b> tab (not shown).</li> <li>○ We can change the printer's settings on the Device and Document Settings tab (shown).</li> </ul> <p>We want to tell our printer to print just in black and white, so select the <b>Custom Properties ...</b> button.</p>
--	--	---

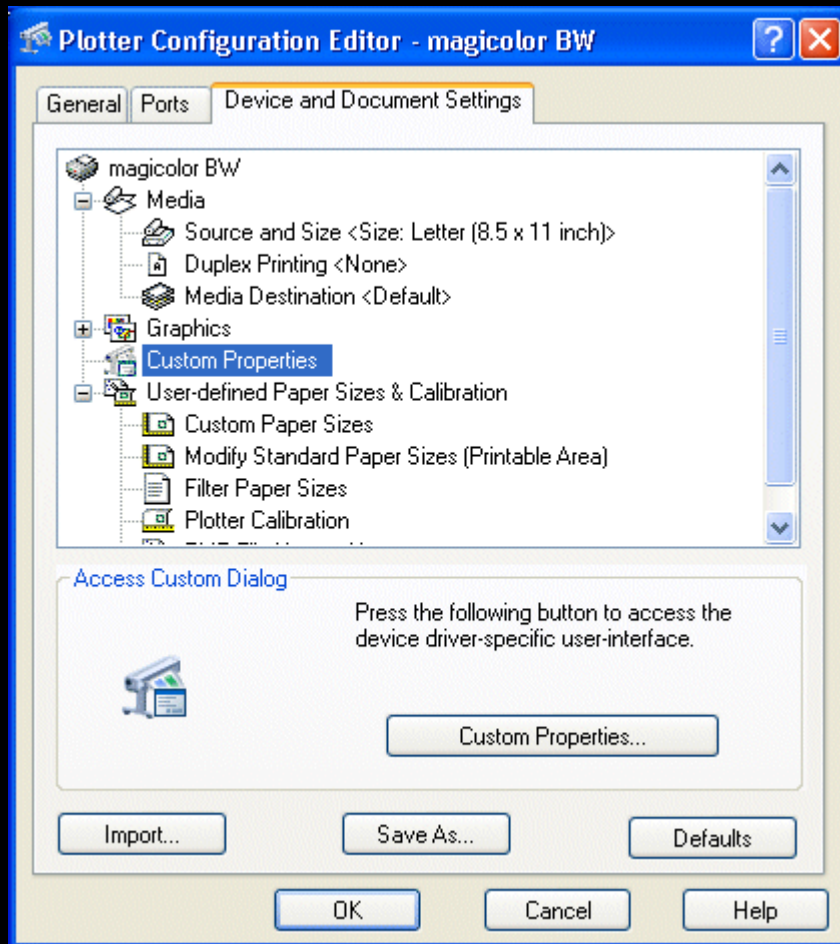



Figure S1.007

[Here Windows presents the printer device's configuration window. This is printer specific, so you must use you printer/plotter's manual as a guide when making whatever changes you wish to make. I'll configure my printer to create a black-and-white print.)

		<p>10. Once you've finished configuring your printer, Windows returns you to AutoCAD's Plotter Configuration dialog box. Pick <b>OK</b> to return to the Add Plotter Wizard.</p>
		<p>11. Lastly, we must calibrate our printer/plotter. This simply means that we must be sure our "tiny man" knows the units with which we're working. Pick the <b>Calibrate Plotter...</b> button.</p>

TOOLS	COMMAND SEQUENCE	STEPS
<p data-bbox="235 277 381 319">Next &gt;</p>		<p data-bbox="824 283 1383 483">12. AutoCAD launches the Calibrate Plotter Wizard (Figure S1.008). The paper size is indicated by default, but you can change the size if necessary. Pick the down arrow to view the options. When you've finished, pick the <b>Next &gt;</b> button.</p>

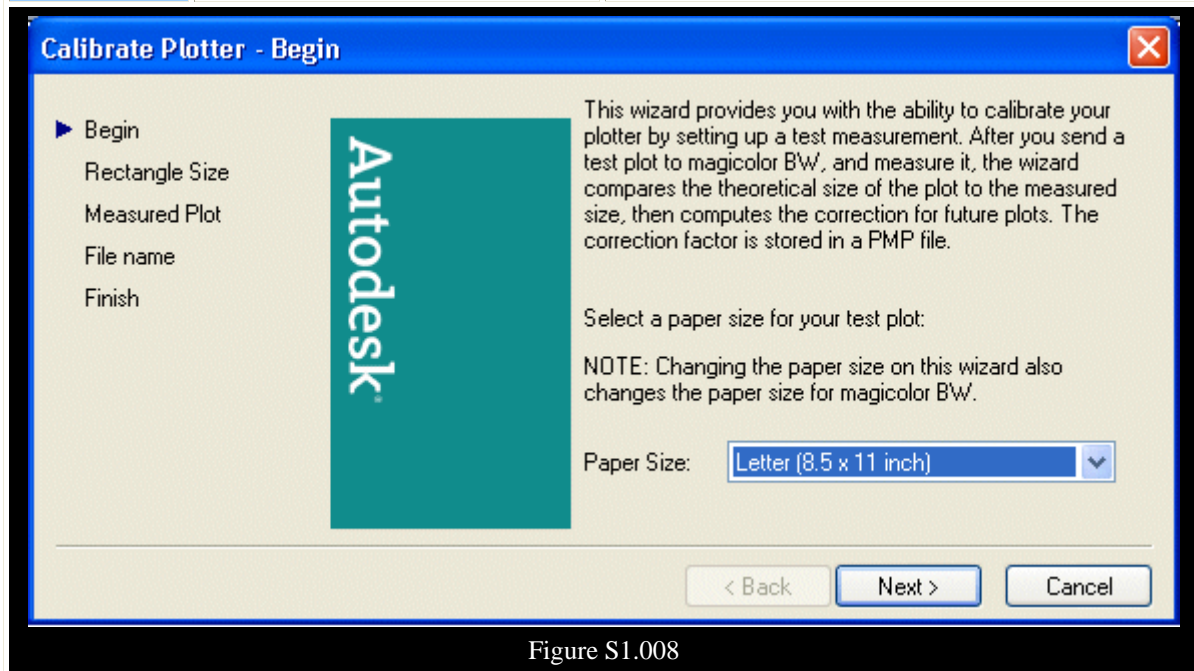


Figure S1.008

<p data-bbox="235 1348 381 1390">Next &gt;</p>		<p data-bbox="824 1171 1383 1411">13. On the next screen (Figure S1.009), tell AutoCAD the largest size rectangle (no fractions) that will fit on the drawing sheet you selected in Step 12.</p> <p data-bbox="824 1312 1383 1411">Be sure your printer is connected and turned on so that AutoCAD can print a sample sheet. Then pick the <b>Next &gt;</b> button to continue.</p>
--	--	---

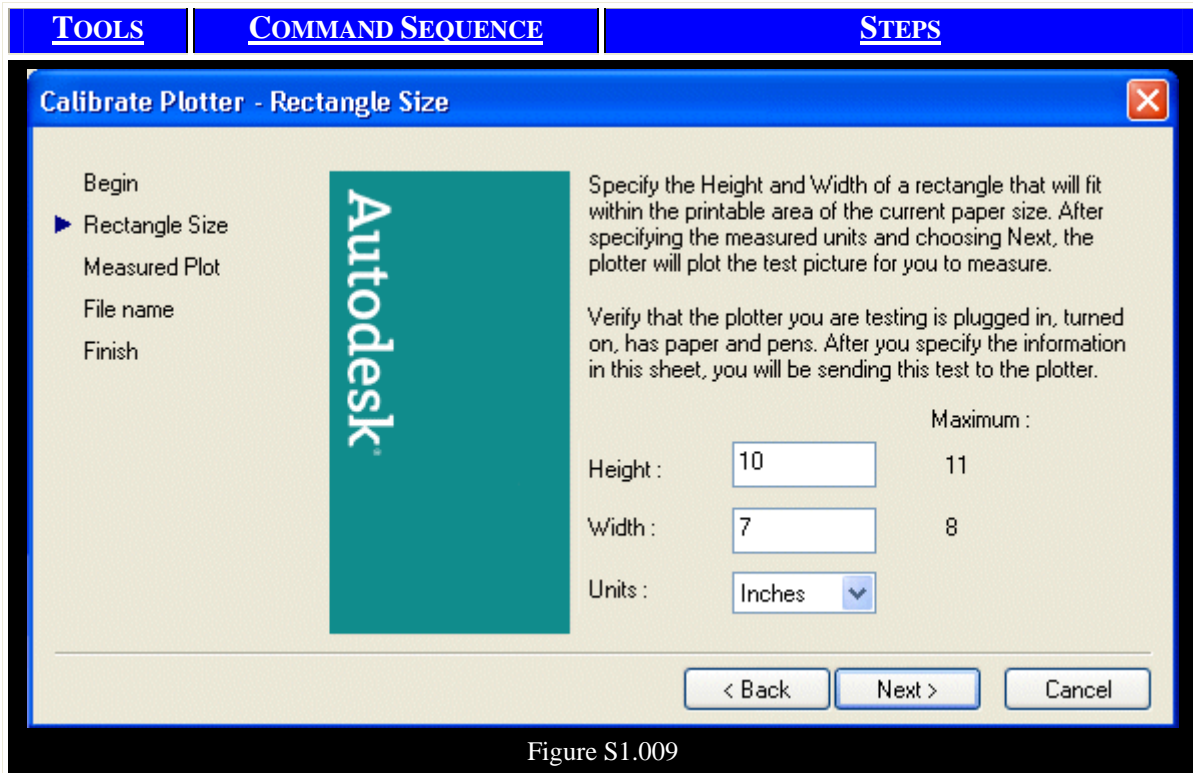


Figure S1.009

		<p>14. Measure the rectangle on the printed page. Adjust the numbers on the Measured Plot dialog box to match those of the printed rectangle.</p> <p>Pick <b>Next &gt;</b> to continue.</p>
<p>Next &gt;</p>		<p>15. Next, AutoCAD asks you to name the calibration file so that the information can be recalled later as needed. Enter an appropriate name as indicated.</p> <p>Pick <b>Next &gt;</b> to continue.</p>
<p>Finish</p>		<p>16. On the last screen, you can ask AutoCAD to verify the calibration if you're not comfortable (or if you made any changes in Step 14). Pick the <b>Finish</b> button when you've finished.</p>
<p>Finish</p>		<p>18. AutoCAD returns to the Add a Plotter wizard. Pick the <b>Finish</b> button here as well, to complete the setup.</p>

Fortunately, the setup procedure needs to be done only once for each printer/plotter! Now your plotter is set up. Next you must set up your Plot Style.